



# ARDENTE DUO<sup>105x43.DGS</sup>

FIREPLACE INSERT / AIR



ENERGY CLASS



## BASIC INFORMATION ABOUT THE PRODUCT



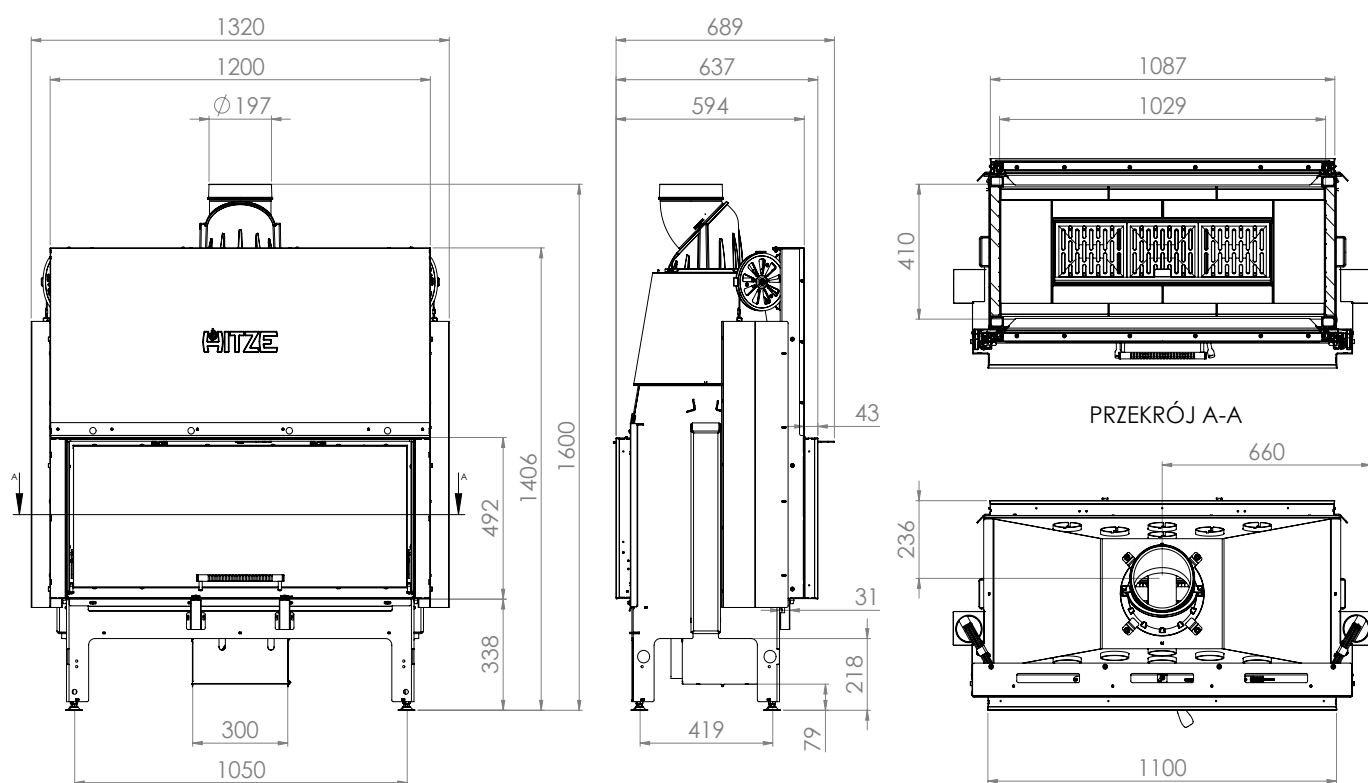
- Tunnel type insert for double-sided or island construction.
- Insert with an enlarged, deep rectangular combustion chamber enabling large loads.
- Tilttable cast iron grate for easy cleaning of the fireplace.
- A new type of guillotine with service access.
- Two heat-resistant decorative DECOR glasses as standard (operating temperature up to 800°)
- Possibility to order dedicated covers (powder-coated steel in the color of the insert).
- Clean glass system: double-sided air deflectors with air curtains.
- Steel doors made of a special profile ensuring stiffness and resistance to high temperatures.
- The insert elements are produced using modern CNC devices (2D, 3D laser, press brakes).
- The insert jacket is made of P265GH boiler steel according to EN 10028-2.

Nominal power [kW]	20
Heating load range [kW]	10-26
Thermal efficiency [%]	78
CO emissions (at 13% O <sub>2</sub> ) [g/m <sup>3</sup> ]	0,036
Pollen emission [g/m <sup>3</sup> ]	0,508
Average fuel consumption [kg/h]	6
Recommended dimensions of outlet grilles [cm <sup>2</sup> ]	1400-1600
Recommended dimensions of inlet grilles [cm <sup>2</sup> ]	800-1300
Glass dimensions [mm]	1053x430
Flue diameter [mm]	198
Inlet diameter [mm]	123
Weight [kg]	395
Efficiency factor	104,1



# ARDENTE DUO

**105x43.DGS**



# ARDENTE DUO

## 105x43.DGS